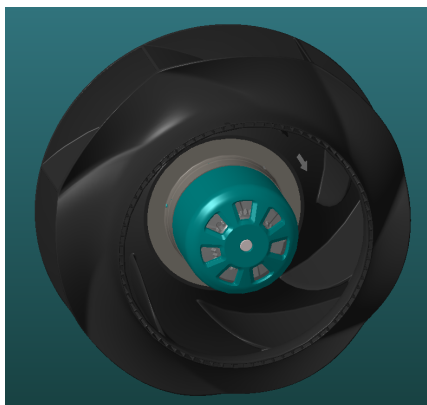


R3G225-8317076415

EC centrifugal fan - RadiCal

backward-curved, single-intake



ASIA PACIFIC SHENGRUI LIMITED

Phone +00852 56261528

info@apacfan.com

www.apacfan.com

Nominal data

Type	R3G225-8317076415	
Motor	M3G055DF	
Phase		1~
Nominal voltage	VAC	220
Nominal voltage range	VAC	200 .. 240
Frequency	Hz	50/60
Method of obtaining data		ml
Speed (rpm)	min ⁻¹	2875
Power consumption	W	170
Current draw	A	1.4
Min. ambient temperature	°C	-25
Max. ambient temperature	°C	45

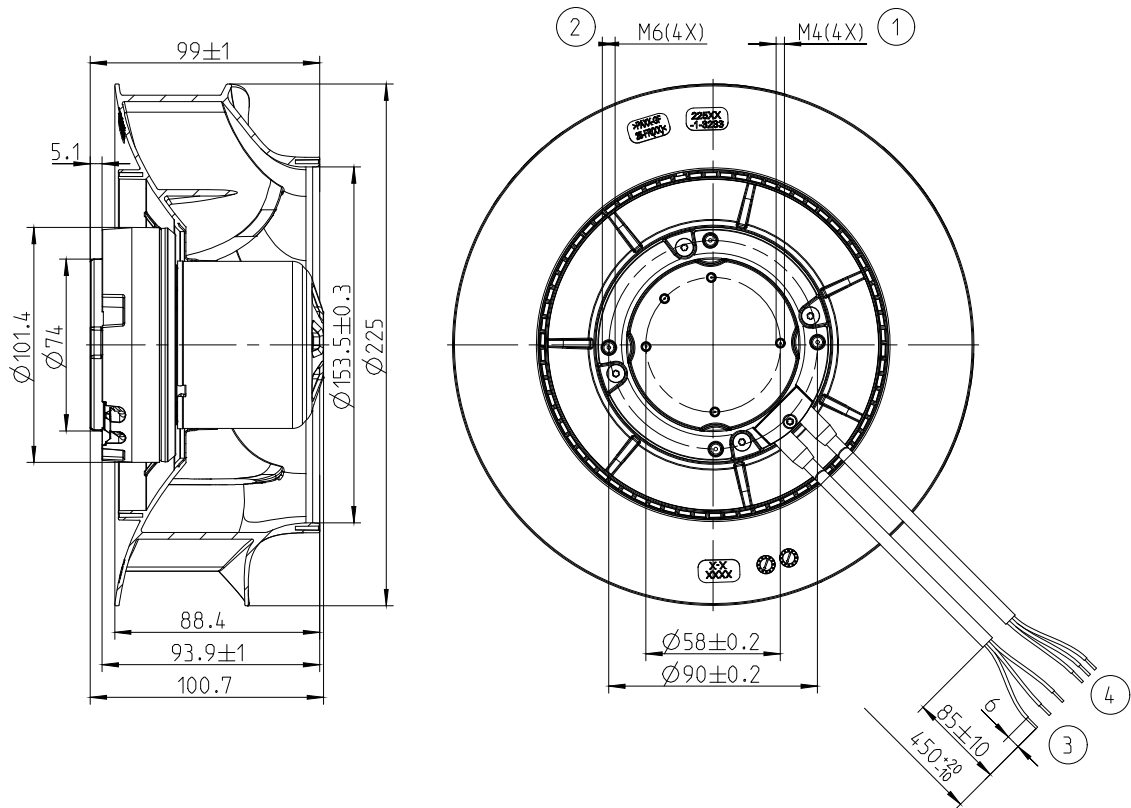
ml = Max. load · me = Max. efficiency · fa = Free air · cs = Customer specification · ce = Customer equipment
Subject to change



Technical description

Weight	1.75 kg
Fan size	225 mm
Rotor surface	Thick-film passivated
Electronics housing material	Die-cast aluminum
Impeller material	PA plastic
Number of blades	7
Direction of rotation	Clockwise, viewed toward rotor
Degree of protection	IP44 (Air inlet upward or horizontal)
Insulation class	"B"
Moisture (F) / Environmental (H) protection class	H1
Max. permitted ambient temp. for motor (transport/storage)	+ 80 °C
Min. permitted ambient temp. for motor (transport/storage)	- 40 °C
Installation position	Any
Condensation drainage holes	On rotor side
Mode	S1
Motor bearing	Ball bearing
Technical features	<ul style="list-style-type: none"> - Tach output - Motor current limit - Soft start - PWM control input
Touch current acc. IEC 60990 (measuring network Fig. 4, TN system)	<= 3.5 mA
Motor protection	Locked-rotor protection
Cable exit	Variable
Protection class	I (if protective earth is connected by customer)
Product conforming to standard	GB12350
Approval	CCC;

Product drawing



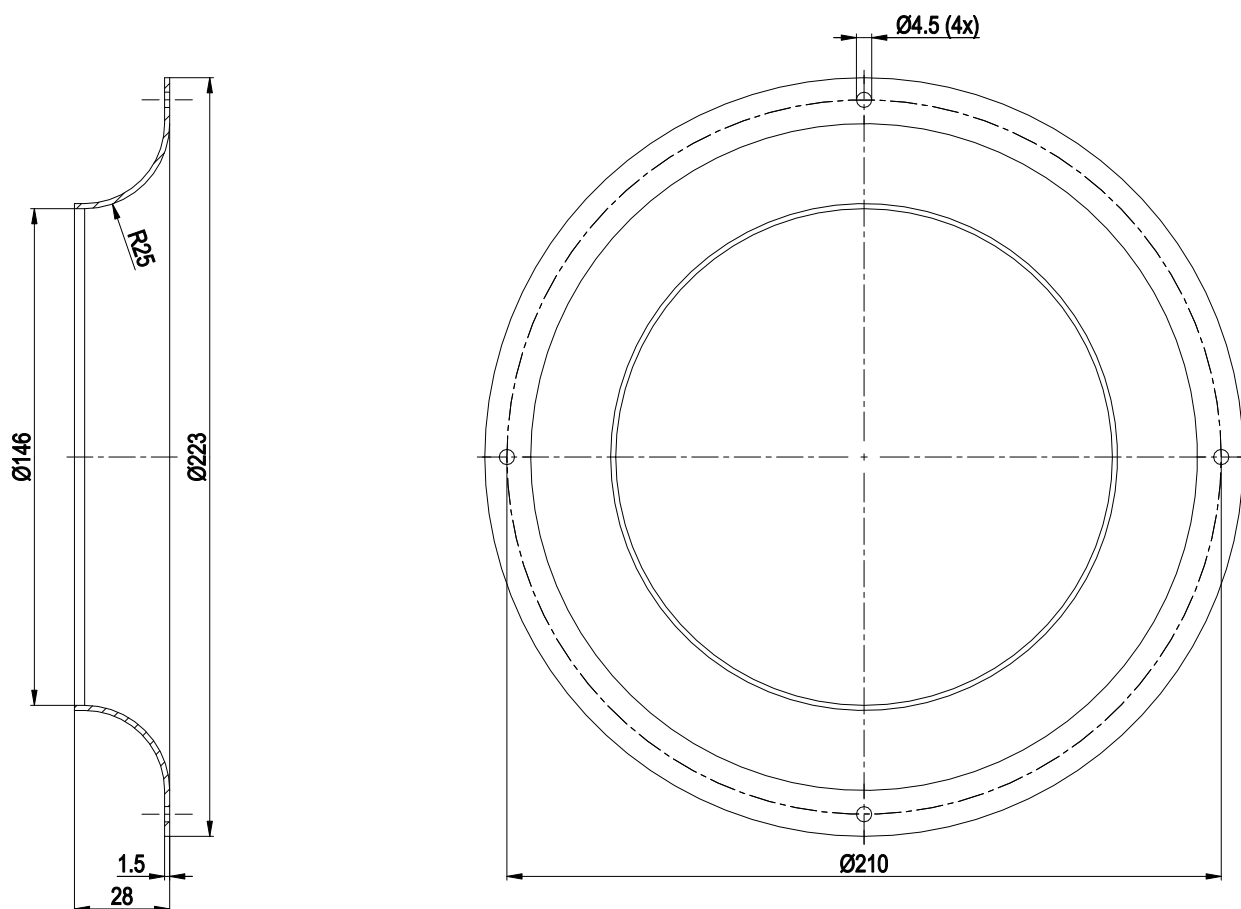
Accessory part: inlet ring 96358-2-4013 not included in scope of delivery

- | | |
|---|---|
| 1 | Max. clearance for screw 6mm |
| 2 | Max. clearance for screw 10mm |
| 3 | Cable PVC 3x 0.25 mm ² , 3x tinning thread |
| 4 | Cable PVC 3x 0.5 mm ² , 3x tinning thread |

EC centrifugal fan - RadiCal

backward-curved, single-intake

Accessory part

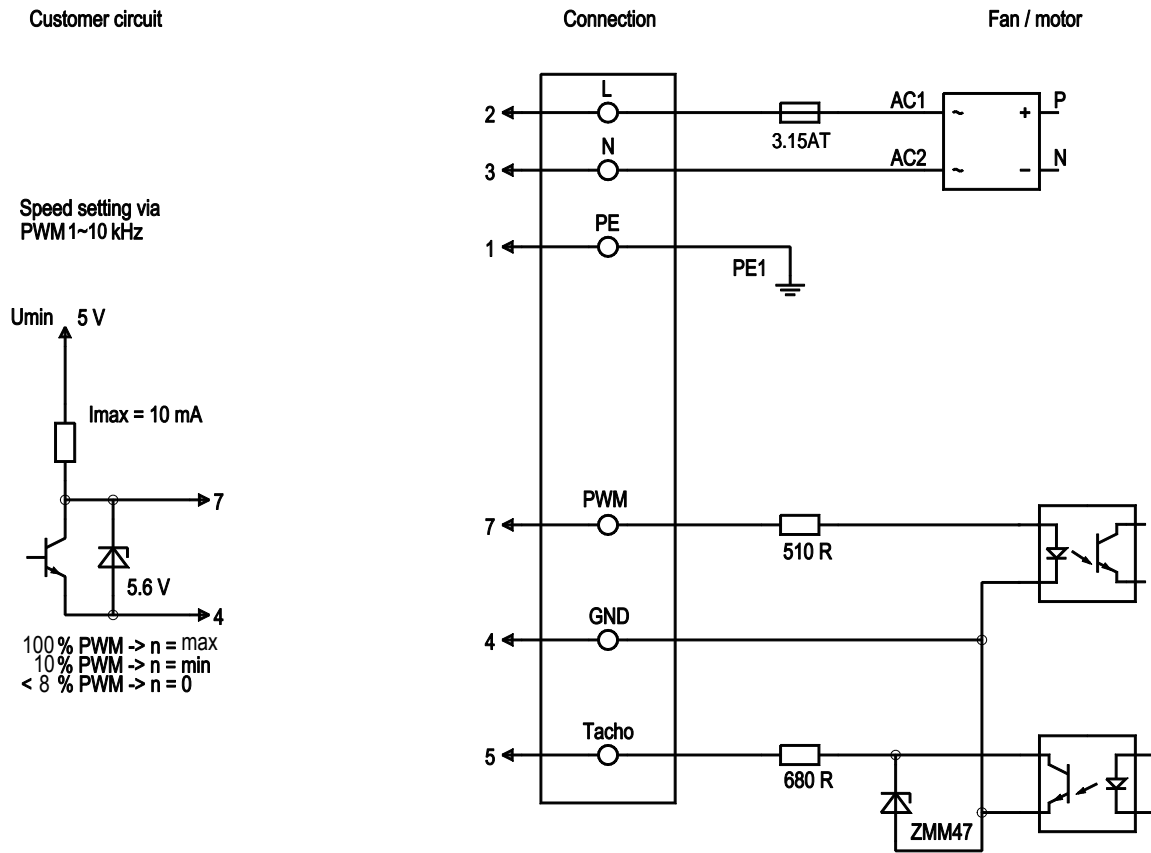


1 Accessory part: inlet ring 96358-2-4013 not included in scope of delivery

EC centrifugal fan - RadiCal

backward-curved, single-intake

Connection diagram

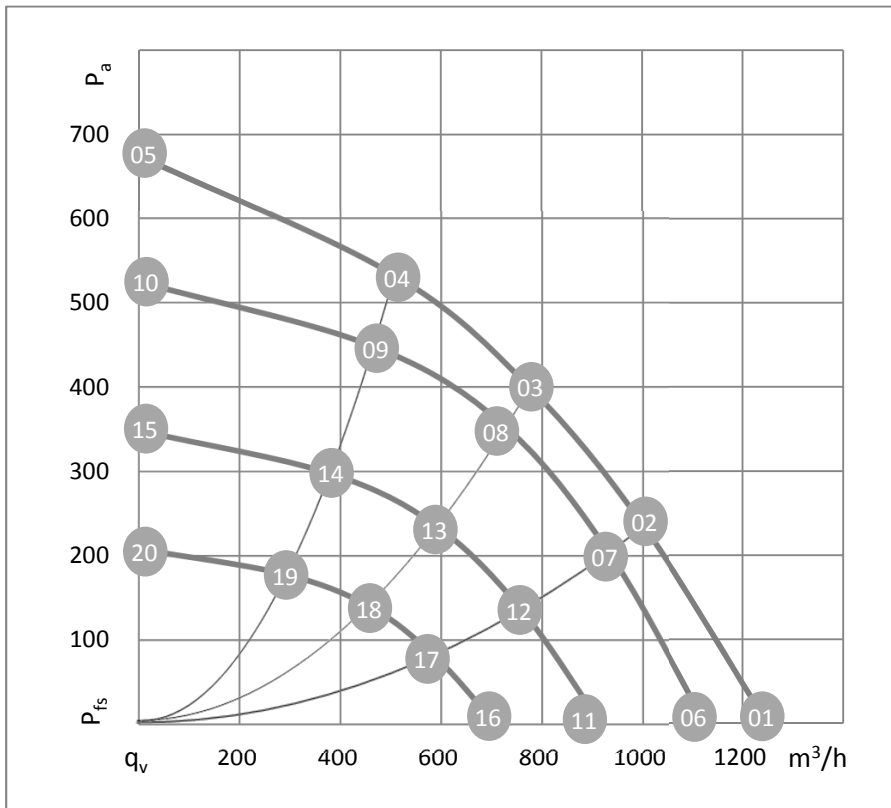


Line	No.	Signal	Colour	Function / assignment
	1	PE	green/yellow	Protective earth
	2	L	brown	Power supply 220 VAC, 50 - 60 Hz
	3	N	blue	Neutral conductor
	4	GND	blue	GND - Connection for control interface
	5	Tacho	white	Tach output: Open Collector, 1 pulse per revolution, electrically isolated
	7	PWM	yellow	PWM control input, electrically isolated

EC centrifugal fan - RadiCal

backward-curved, single-intake

Curves: Air performance 50 Hz



$\rho = 1.2 \text{ kg/m}^3 \pm 2\%$

Test ID:8980

Air performance measured according to ISO 5801 installation category A. For detailed information on the measurement setup, contact ebm-papst. Intake sound level: Sound power level according to ISO 13347 / sound pressure level measured at 1 m distance from fan axis. The values given are valid under the specified measuring conditions and may vary due to conditions of installation. For deviations from the standard configuration, the parameters have to be checked on the installed unit.

Measured values

Index	U	f	n	P _{ed}	I	LpA _{in}	LwA _{in}	q _v	P _{fs}	q _v	P _{fs}
	v	Hz	min ⁻¹	W	A	dB(A)	dB(A)	m ³ /h	Pa	cfm	in.wg
01	220	50	2995	160	1.36	72	79	1249	0	735	0.00
02	220	50	2900	171	1.45	68	76	1001	235	589	0.94
03	220	50	2875	172	1.45	64	72	773	401	455	1.61
04	220	50	2943	165	1.39	63	70	505	533	297	2.14
05	220	50	3061	85	0.74			0	674	0	2.71
06	220	50	2700	117	1.00	69	76	1126	0	662	0.00
07	220	50	2700	138	1.17	66	74	933	204	549	0.82
08	220	50	2700	143	1.20	63	70	726	354	427	1.42
09	220	50	2700	128	1.08	61	69	464	448	273	1.80
10	220	50	2700	58	0.51			0	525	0	2.11
11	220	50	2200	64	0.54	64	71	918	0	540	0.00
12	220	50	2200	75	0.63	61	69	760	135	447	0.54
13	220	50	2200	77	0.65	57	65	591	235	348	0.94
14	220	50	2200	69	0.58	56	63	378	298	222	1.20
15	220	50	2200	31	0.28			0	348	0	1.40
16	220	50	1700	29	0.25	57	65	709	0	417	0.00
17	220	50	1700	34	0.29	55	62	587	81	345	0.32
18	220	50	1700	36	0.30	51	58	457	140	269	0.56
19	220	50	1700	32	0.27	49	57	286	179	168	0.72
20	220	50	1700	15	0.13			0	208	0	0.84

